



5000 SERIES ROTORS AND RAIN CURTAIN NOZZLES

Relax knowing your landscape is being watered with Rain Bird's reliable 5004 Series Rotor with industry-leading Rain Curtain Nozzles Technology.



Application:

Rain Bird 5000 Series Rotors are ideal for medium to large size landscape areas and evenly distribute water from 25-50 feet.

Outstanding Results:

Superior Distribution Uniformity

The 5000 Series Rotors with Rain Curtain Technology are engineered to deliver a uniform spray pattern, giving you a consistently green lawn and lush landscape throughout the entire radius of the sprinkler head.

Superior Wind Resistance

The larger water droplets produced by Rain Curtain technology prevent misting and airborne evaporation so the right amount of water is delivered to the right place, saving you water and money.

Superior Close-In Watering

Gentle close-in watering eliminates dry spots around the rotor, prevents seed washout, and allows turf to grow healthy with no matting or bending.



Recommended Water Conservation Options:

- Seal-A-Matic (SAM) check valves prevent water from draining through low heads upon zone shut-down. A must for sites with excessive slopes, low pressure, or where pumps are used.
- Pressure Regulating Stem (PRS) regulates the water pressure at each head, ensuring optimum performance. This factory installed option ensures that each sprinkler delivers precise and consistent watering.
- 5004 PLUS features a flow shut-off device inside the head to change a nozzle during operation, or shut down-unwanted sprinklers from running.

Additional Options:

- Purple covers for easy identification of non-potable systems.
- 4", 6", and 12" pop-up heights for varying grass or plant heights.
- Stainless steel riser that is vandal resistant.



Installed with confidence by:





Don't just water your grass, IRRIGATE it!

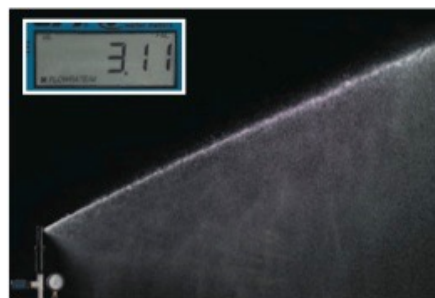
Installing a sprinkler head is just the beginning. Without consideration for the correct nozzle size, water pressure, and the slopes of your yard, distributing and optimizing water cannot be achieved.

Rain Bird's 5000 Series Rotors have got you covered:

- With 10 nozzles available, choosing the correct quantity of water for the area to be covered has never been easier (matched precipitation).
- With our Seal-A-Matic (SAM), low-head drainage is virtually eliminated from the rotor on slopes up to 10 feet, reducing water waste through the rotor every time the system shuts down.
- With our exclusive pressure regulating stem (PRS), water droplet size is optimized *at each head*, reducing misting and fogging, which results in wasted water.

In this test, Rain Bird PRS rotors saved 0.70 gpm by reducing operating pressure to 45 psi.

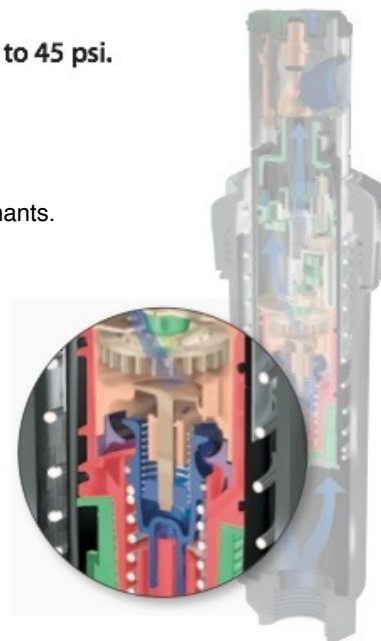
- Rain Bird is the exclusive manufacturer of PRS Rotors.
- By reducing pressure and optimizing flow, PRS minimizes wear and tear placed on the components, ensuring reliability and extending system life.
- The unique PRS debris shield prevents component damage caused by grit and contaminants.



5000 PRS ROTOR with 3 gpm nozzle at 79 psi inlet pressure. PRS regulated flow to 3.11 gpm.



Non-PRS competitive rotor with 3 gpm nozzle at 79 psi inlet pressure. Without PRS, flow rose to 3.81 gpm.



At 79 psi incoming pressure, a Rain Bird pressure regulating rotor uses .7 gallons per minute less water than the competitive non-regulated rotor. That is over a 20% savings! See the below chart for your anticipated savings.

How much water can you save each minute using Rain Bird® 5000 PRS Rotors with Flow Optimizer Technology?

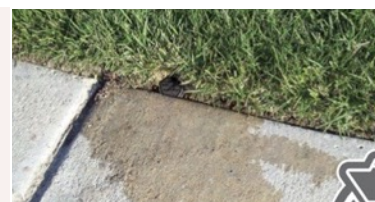
		Dynamic Pressure							
		45	50	55	60	65	70	75	80
Total Zone Flow in GPM	6	0	0.33	0.66	0.96	1.25	1.54	1.81	2.06
	8	0	0.43	0.85	1.24	1.62	1.98	2.33	2.67
	10	0	0.55	1.07	1.57	2.05	2.52	2.96	3.39
	12	0	0.66	1.27	1.86	2.43	2.97	3.50	4.01
	14	0	0.77	1.49	2.18	2.84	3.48	4.10	4.70
	16	0	0.87	1.69	2.48	3.24	3.97	4.67	5.35
	18	0	0.98	1.90	2.79	3.64	4.46	5.25	6.01
	20	0	1.10	2.12	3.10	4.05	4.96	5.83	6.68
	22	0	1.21	2.33	3.42	4.46	5.47	6.44	7.37
	24	0	1.30	2.54	3.72	4.85	5.94	7.00	8.01
	26	0	1.41	2.76	4.04	5.27	6.45	7.60	8.70
	28	0	1.53	2.96	4.34	5.66	6.93	8.16	9.35
30	0	1.63	3.17	4.65	6.07	7.43	8.74	10.02	

Total gallons of water saved per minute of run time

Ex: At 70 psi a zone with 20 gpm of flow would save 4.96 gallons a minute with 5000 PRS

Seal-A-Matic (SAM): Low head drainage is caused by changes in elevation. Gravity forces water in the lateral line to drain out of the lowest head on the zone. The Rain Bird 5000 rotary head with Seal-A-Matic check valve puts an end to unnecessary water waste.

The SAM check valve option holds back up to seven feet of elevation pressure, sealing water in the lateral line and preventing erosion and standing water that is caused by low head drainage.



Without SAM



With SAM



Rain Bird Corporation
 970 West Sierra Madre Avenue
 Azusa, CA 91702
 Phone: (626) 812-3400
 Fax: (626) 812-3411

Technical Services and Support
 (800) RAINBIRD (U.S. and Canada only)

Installed with confidence by:



With SAM
 3 Industrial Dr.
 Smithfield, RI 02917
 401-232-7400
 Fax 232-7450
 RIMI #166
www.CompleteIrrigation.net